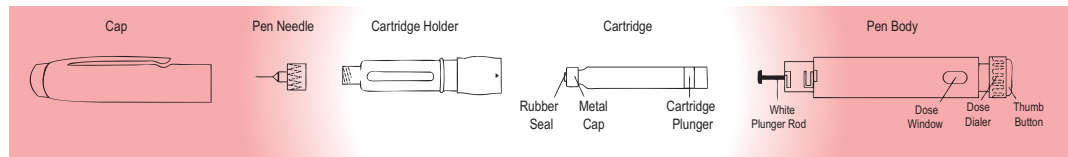


Evaparin Pen

Learn about all of the parts of the Pen, Cartridge and the Pen Needle. You need to recognize these parts to follow the directions. The Dosage Scale on the Pen has numbers and audible clicks to help you set the correct dose.



Evaparin Pen Injector Cartridge and Needle Assembly:

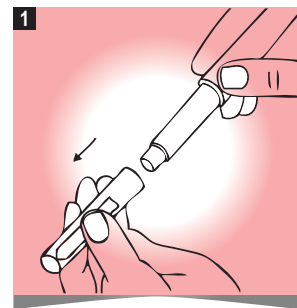
After every usage, store below 25°C.

Replace the cartridge after 28 days from the first usage.

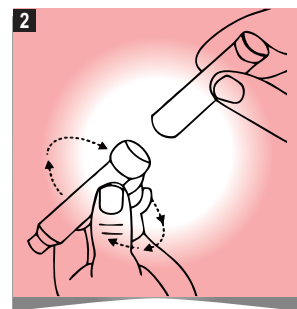
Ensuring aseptic injection

Before preparing yourself for injection wash your hands and after dialing your medication dose with the Evaparin Pen Injector, wipe the intended area of injection with antiseptic solution. Allow the antiseptic solution at the injection site to dry and then inject. If you are loading a new cartridge in the Evaparin Pen Injector, wipe the rubber seal at the needle end with antiseptic solution.

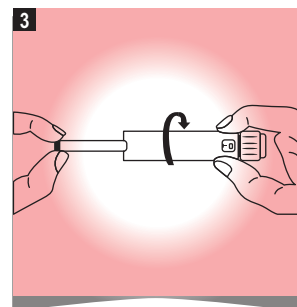
Loading the Cartridge into the Evaparin Pen Injector



While holding the Evaparin Pen Injector with one hand, remove the Evaparin Pen Injector Cap by pulling with the other hand and Put the cap aside on a clean, dry surface.

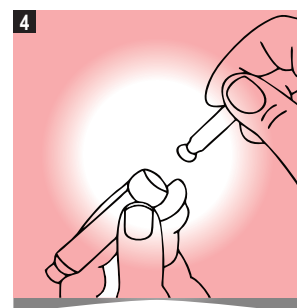


Rotate the Cartridge Holder from the Pen Body until it stops, then pull apart to separate.



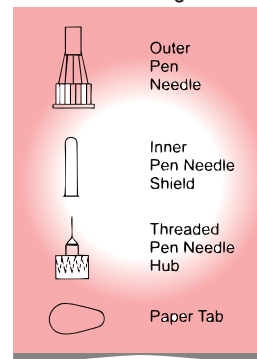
Ensure that the internal plunger is fully retracted. If not fully retracted retract the plunger first.

To retract the internal plunger hold the head of the internal plunger firmly and rotate the Pen body clockwise till the internal plunger is fully retracted. Internal plunger can also be retracted by pushing the head with thumb pressure.



Insert the correct Cartridge, Metal Cap first, into the Cartridge Holder.

Note: It is strongly recommended to use Evaparin Pen Injector only for Evaparin cartridge.



Lower the Pen Body onto the Cartridge Holder, then push and screw them together on the Pen Body.

Note: Use only a new cartridge when loading the Evaparin Pen Injector.

Remove the paper tab from the back of a new Pen Needle.

Attaching the Pen Needle

Holding the Cartridge Holder, push the Pen Needle unit onto the Evaparin Pen Injector. Then screw the threaded hub of the Pen Needle onto the Cartridge Holder as shown in Figure 7. With a gentle pull, remove the Outer Pen Needle Shield. Save the Outer Pen Needle Shield. You will use it to remove the Pen Needle from the Evaparin Pen Injector after your injection is finished.

Checking Medication Flow

A - Do not touch the needle or let it touch any surface.

B - Carefully remove the Inner Pen Needle Shield.

C - Hold the Evaparin Pen Injector with the needle pointing up. Tap the Cartridge Holder gently with your finger to help air bubbles rise to the top of the cartridge. Small bubbles may remain and will not affect the dose.

If you see a large air bubble dial the dose dialer to 2.

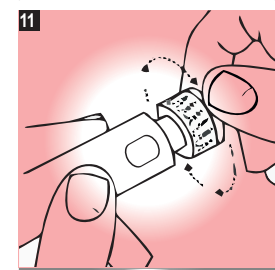
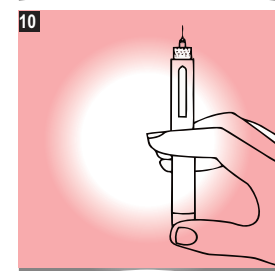
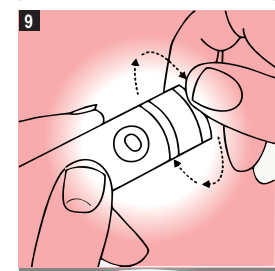
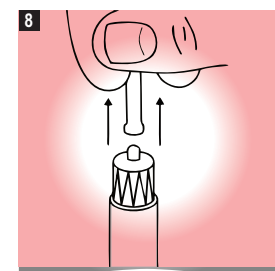
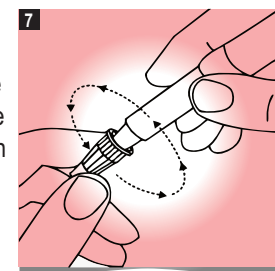
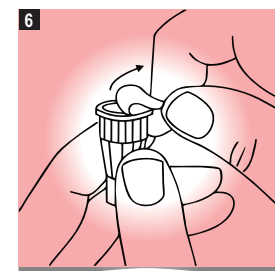
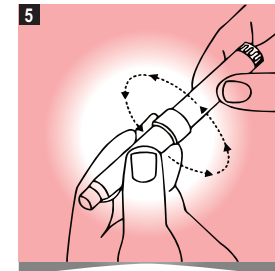
Press in the Thumb Button fully with the needle pointing upward. Look at the Pen Needle tip to see if medication has come out. If it has, stop, this Step is complete. If not, dial up 2 more units, press in the Thumb Button fully, and check for medication. Continue to dial up 2 units and press in the Thumb Button fully until you see medication come out of the Pen Needle.

Caution: For safety reasons, you must always check for medication flow before each dose. If you do not do this, you may receive less medication than the dose that you dialed.

A - To set your dose, turn the Dose Dialer until you see the required number in the middle of the Dose Window aligned with the mark corresponding to the dose in mg recommended by your doctor (refer below table for dose dialing). You will hear a click for each increment you dial. Do not rely on counting these clicks to measure the correct dose. Make sure the required dose (corresponding number) is aligned with the mark.

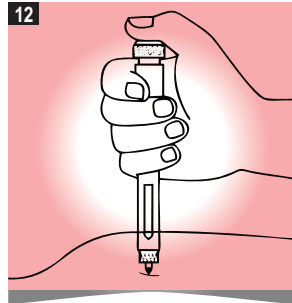
Unit	20	40	60
mg	20	40	60

Important Dose correction- Set the dose to the appropriate unit on the dose scale. (If you dial too far by mistake, dial backwards to correct the error.)

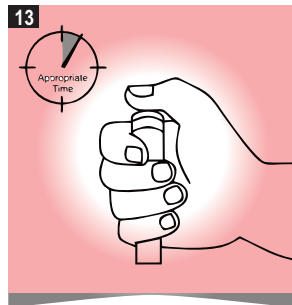


Evaparin Pen

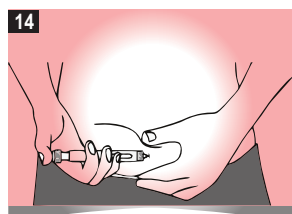
Making the Injection- Once the correct dose is set the Evaparin Pen Injector is ready for injection.



Inject the drug in the area as per your doctor's recommendations. Form a skin fold at the point recommended by your doctor and, places the pen at the stipulated angle.



After the Pen Needle insertion, push the Thumb Button in as far as it will go and hold the Thumb Button down firmly. A clicking sound will be heard while dispensing your dose. Continue to press the Thumb Button firmly for the appropriate time (Always wait 10 seconds before removing the pen from the skin in order to avoid flow back and dripping.) before you remove the Pen Needle from the skin.

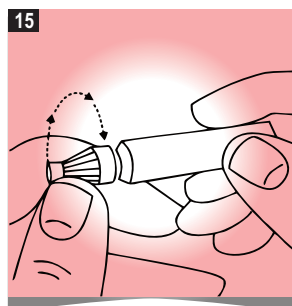


If medication continues to drip from the Pen Needle after injection, hold the Pen Needle in your skin longer the next time you inject. If the Thumb Button stops before the end of its travel and the Dose Window do not read "0", the cartridge is empty and the full dose has not been dispensed. The Dose Window will show the amount of medication still required remove the Pen Needle from the skin and write down the number.

Remove the Pen Needle from the Evaparin Pen Injector as described in Step

15. Reset the Dose Dialer to "0" by holding the Evaparin Pen Injector and turning the Dose Dialer backward until it shows 0 as shown in Figure 9. Remove the empty cartridge by unscrewing the Cartridge Holder from the Pen Body. Insert a new cartridge and check the medication flow as described in Steps 6 - 10. Set the dose which you noted, and inject. This will complete the dose.

Important: Before attempting to replace a cartridge, be sure that the Pen Needle unit is not attached to the Evaparin Pen Injector.



Removing the Pen Needle

A - Carefully replace the Outer Pen Needle shield. Hold the Evaparin Pen Injector firmly by the Cartridge Holder and unscrew the Pen Needle from the Cartridge Holder. Replace the pen Cap and dispose of the used Pen Needle properly. B - Your Evaparin Pen Injector can now be stored in its case. You should follow local regulations in your country concerning the handling of potentially infectious materials (pen needles, single-use syringes, etc.) for disposing the used Pen Needles.

Troubleshooting

Problem	Possible Cause	How to Eliminate
Dose Dialer does not turn easily.	Dust or dirt.	Turn the Dose Dialer beyond the highest setting on the scale. Wipe all exposed surfaces.
You have dialed a higher dose than required.	User error	Correct dose as described in Step 11.

The Thumb Button cannot be pushed or stops during the injection. (Dose Dialer does not return to "0").	Cartridge is empty and full dose has not been dispensed.	Remove the Pen Needle as described in Step 15 and replace the empty cartridge with a new cartridge.
Clogged Pen Needle.	Clogged Pen Needle.	Remove the Pen Needle as per Step 15 and replace it with a new Pen Needle as described in Step 6 to make the injection.
No clicking is heard during the injection (Dose Dialer moves freely).	Pen is in dose correction mode.	Remove the Pen Needle as per Step 14, 15 and repeat the process from Step 6 to make the injection.
Medication continues to drip from the Pen Needle after injection.	Pen Needle was removed from the skin too early.	Be sure to hold the Thumb Button down and keep the Pen Needle in your skin longer the next time you inject. If this happens you should inform your doctor
No medication flow.	plunger rod is not in contact with cartridge plunger.	Repeat steps 8, 9 and 10 "Checking Medication Flow." This process allows the white plunger rod to come in contact with the cartridge plunger.

Care and Storage

Once cartridge is loaded into pen device, Store the device store below 25°C.

If there is Cartridge medicine left for more injections, put the Pen Cap back on the Pen Body and store your Pen in a safe place.

Do Not Freeze the Device when loaded with cartridge.

Protect from light.

Protect your Evaparin Pen Injector by storing it in a case. Your Evaparin Pen Injector has been engineered to provide highly accurate and reliable performance. As with all precision instruments, it must be properly cared for.

- Never wash the pen in water or strong surgical disinfectants. Only a clean, damp cloth should be used for routine cleaning.
- Avoid exposure to dust, moisture and temperature extremes.
- Do not attempt to repair the pen yourself.
- If it is damaged or if faults cannot be resolved by following the "Troubleshooting" section above, contact your local Evaparin Pen Injector provider.
- Evaparin Pen Injector is designed for use by one person only and should not be shared with others.

If your Evaparin Pen Injector is defective in materials or workmanship, the local pen provider will replace the Evaparin Pen Injector.



Packed & Marketed by :

INTAS PHARMACEUTICALS LTD.

Matoda- 382210, Dist. : Ahmedabad. INDIA